

Data Portal Instructions

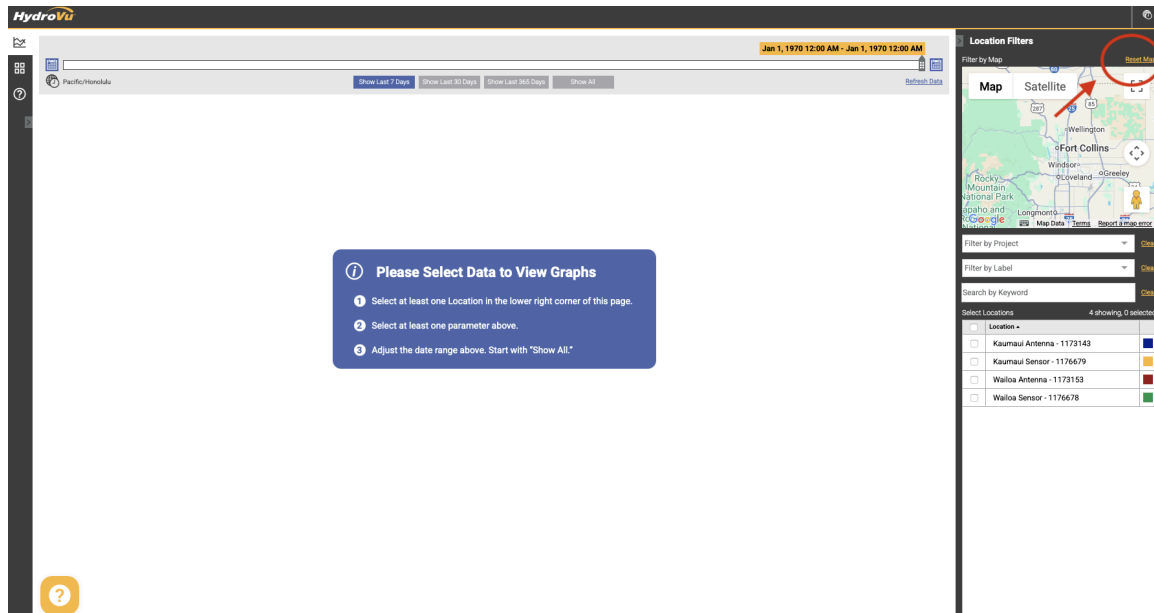
Purpose: This document provides step-by-step instructions for accessing, viewing, and downloading water quality data from the Moku O Keawe–East portal. It is intended to support community members, collaborators, and project partners in navigating public-access features, understanding available measurements and parameters, and requesting data exports when needed.

Public Access Instructions

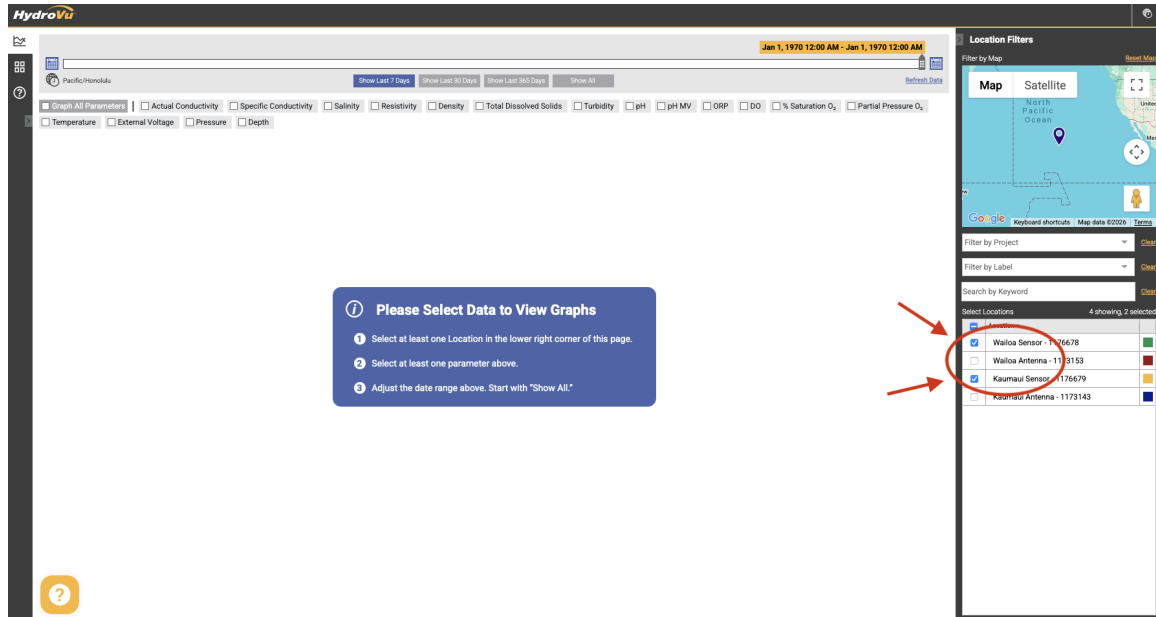
1. Click on [this link](#) to open the data portal.

Note: If the data doesn't automatically populate, follow the following instructions.

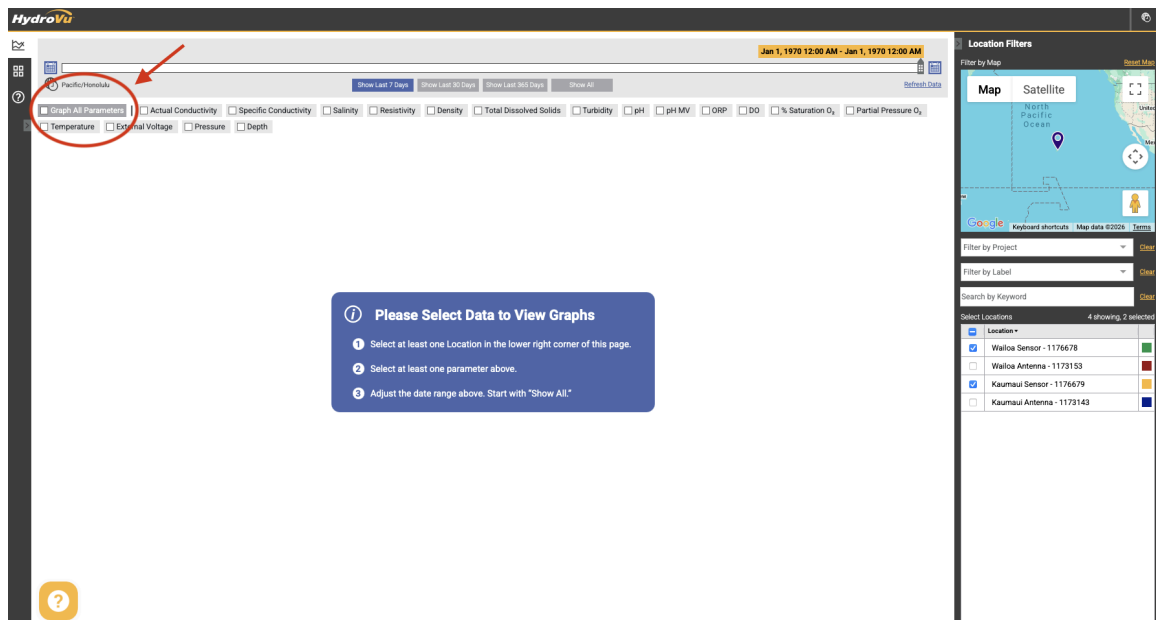
2. Click “Reset Map” on the right side of the screen.



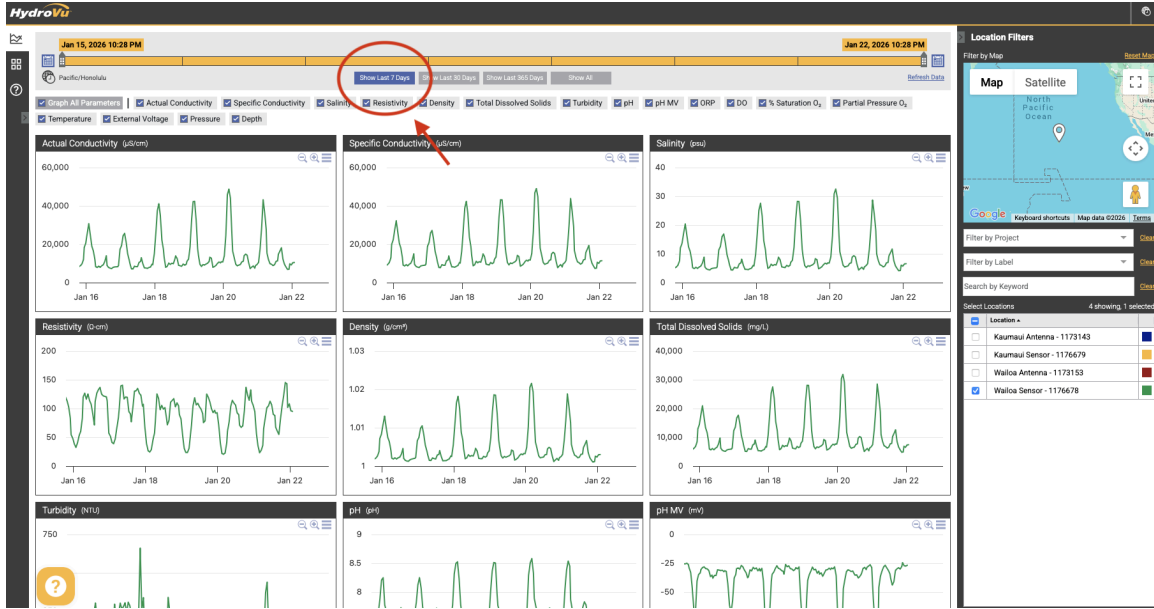
3. Enable the Kaunauhi and/or Wailoa sensors by checking the boxes below the map view, depending on which data you'd like to view.



4. Enable “Graph All Parameters” near the upper left-hand corner of the screen.



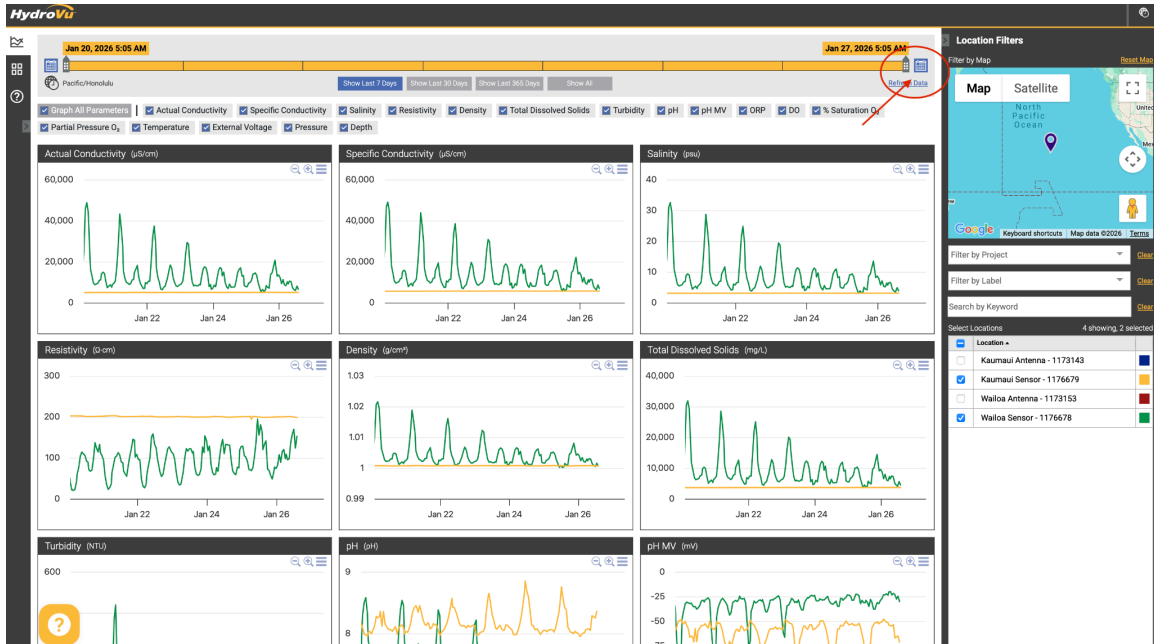
5. Click “Show Last 7 Days” near the top of the screen.



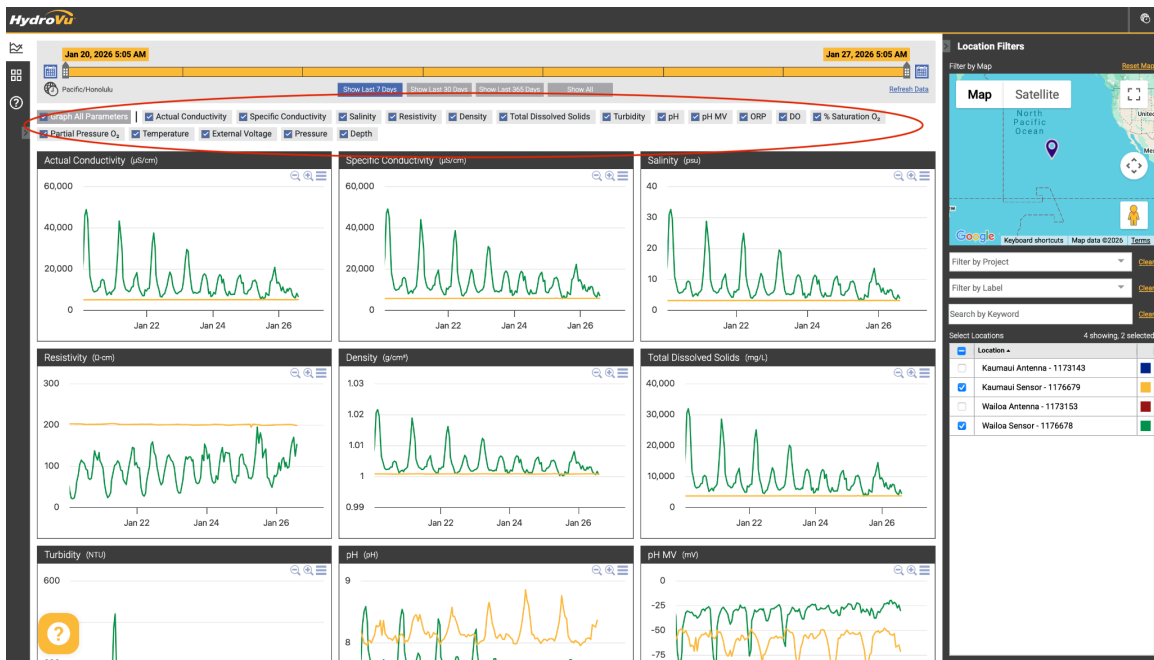
6. The data should now appear. You can adjust the time frame using:
 - a. The scroll bar at the top, or



- b. The calendar menu to select a custom date range.

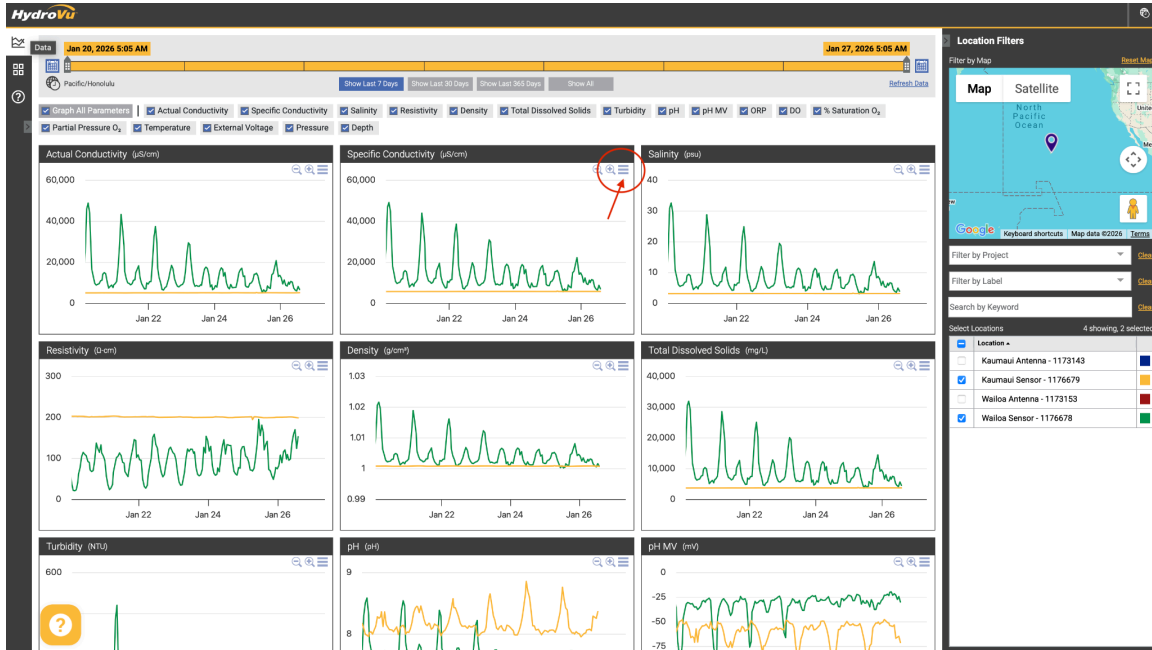


7. You can also choose which data to display by selecting or deselecting the parameter boxes at the top.



Data Download

- You can download individual graphs by clicking the three horizontal lines at the top right corner of each graph.



- This public-access link does not allow downloading of all data into an Excel sheet. If you need a full data export, email me at ckauchi@hawaii.edu and I can retrieve it for you. Please allow me up to two weeks to get this back to you.
- If you expect to download large amounts of data regularly, I can create a login for you so you can access and export data anytime—just let me know.